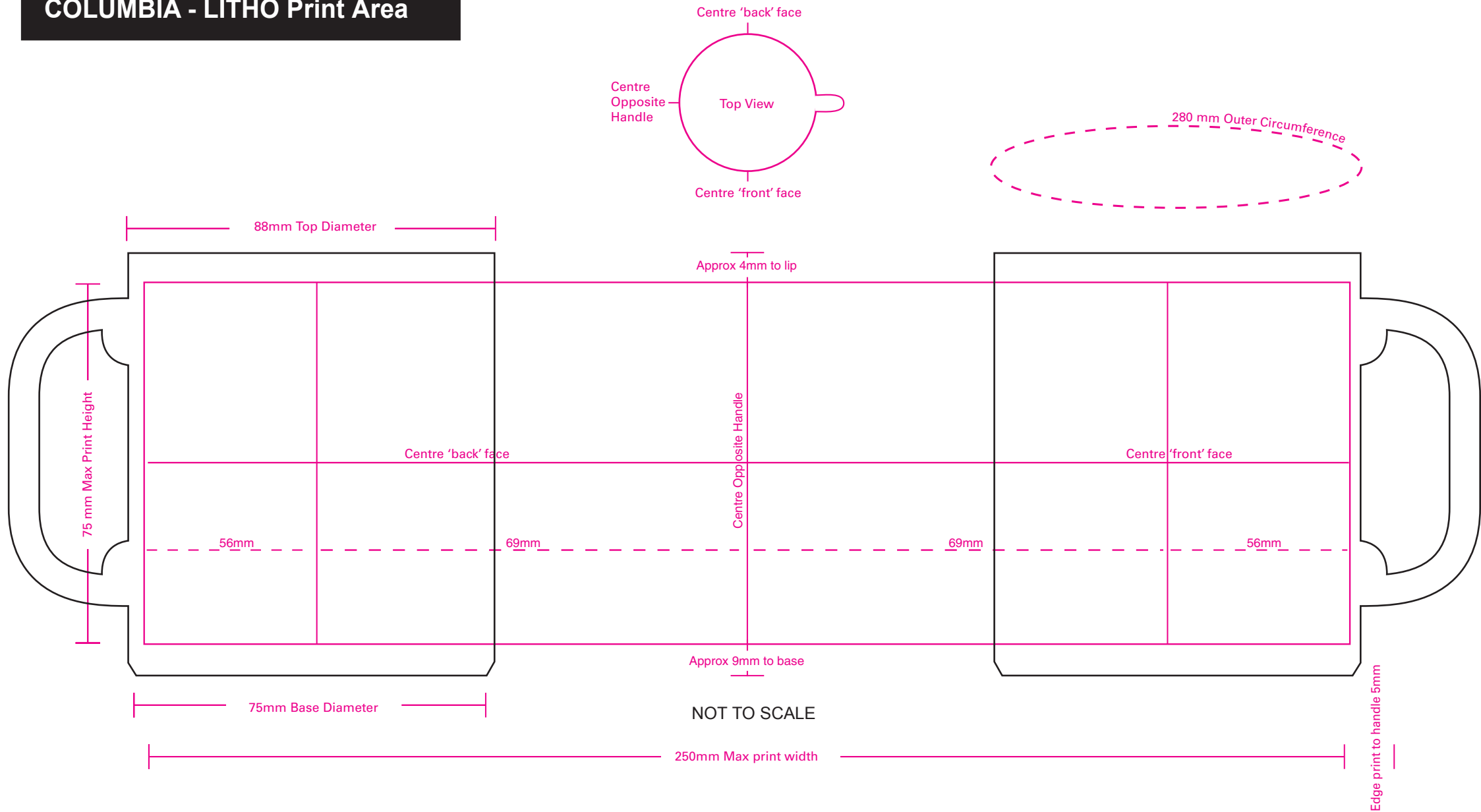


# COLUMBIA - LITHO Print Area



## Please Note:

All reference to 'front and back faces' assume mug is held in right hand.

Screen print lines should be 1pt (0.353 mm) minimum thickness to avoid drop out ('Reversed out' lines to be same to avoid fill in).

Text should be minimum 8pt to remain legible

All dimensions are subject to +/- manufacturing tolerances.